



A **HEICO** COMPANY

2026 PRODUCT CATALOGUE

Strong, Integrated & Mission-Focused

Advancing your aerial delivery and aviation safety objectives with interoperable, modular solutions engineered for mission-critical performance.

WE'VE COME A LONG WAY FROM HORSESHOE NAILS FOR THE U.S. CAVALRY

In 1881, Englishman George J. Capewell founded the Capewell Horse Nail Company in Hartford, Connecticut. His patented automated machines made Capewell the only company in the world that could mass produce horseshoe nails in an era when horses powered transportation worldwide. For decades, the company grew and prospered based on this single high-demand product that no one else could match.

NEW OPPORTUNITIES

As time marched on and the automobile replaced horse-drawn vehicles, Capewell looked for new opportunities, and, in 1939, began a collaboration with the U.S. government to develop specialized hardware for military paratroopers. We are proud to say that Capewell hardware has been standard equipment on U.S. military parachutes ever since the first Army Airborne parachute units were trained at Fort Benning, Georgia, in 1942.

The U.S. Army adopted the Capewell Parachute Release which—for the first time—allowed jumpers to quickly release their chutes once on the ground to prevent being dragged by the wind. Nearly six decades later, “Capewells” are still indispensable safety equipment for military and sport parachutists worldwide.

For its first 100 years, Capewell thrived on two basic but essential products: the horseshoe nail and the parachute release. Remarkably, both products are still in production today.



Above: Captain John L. Swigert, Jr., F-100A Super Sabre pilot, 118th Fighter Squadron, Connecticut Air National Guard, ~1956. (U.S. Air Force via Jet Pilot Overseas)

Left: Capewell factory, ~1903
Far left: Capewell Horse Nail Company, Hartford CT - National Register of Historic Places, ref. # 99000927

Below: Capewell today

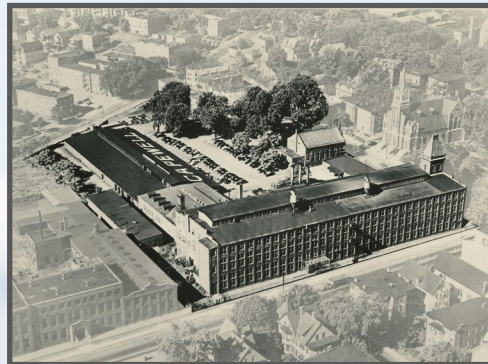


Table of Contents

INTRODUCTION TO CAPEWELL / CAPABILITY STATEMENT 4

AERIAL DELIVERY & DESCENT SOLUTIONS

Capewell Parachute Release 6

Frost Ejection Seat Parachute Release 7

Emergency Descent Device (EDD)..... 8

Emergency Descent Device (EDD) Rebuild Service 9

Type V Aerial Delivery Platform.....10

Type V Sub-system Assemblies.....12

Aerial Delivery Cargo Parachute Release Assemblies – M1 / M2.....13

Extraction Force Transfer Coupling (EFTC)14

Aerial Delivery Ancillaries15

Suspension Slings & Extraction Lines.....16

Center Vertical Restraint System (CVRS).....17

Buffer Stop Assembly (BSA).....18

Next Generation Aerial Delivery System (NGADS)19

Universal Maritime Craft Aerial Delivery System (UMCADS).....20

UMCADS Configured with Boomeranger RHIB.....21

UMCADS Configured with SubSea Craft “Victa”22

UMCADS Configured with Kraken K3 Scout23

UMCADS Configured with Zodiac Milpro RHIB.....24

UMCADS Configured with Whiskey Project Group Craft25

Maritime Modular Platform (MMP) System by Babcock.....26

C130 Tow Plate.....27

Ripcords, Grips & Pins28

Energy Dissipating Material (EDM)29

TIMERS

Precision 2-10 Mechanical Timer..... 30

Timing Mechanism – 19 Series.....31

Heavy Duty Timesrs – 70AB Series32

3 Position Commercial Grade Time Switch.....33

2 Position Commercial Grade Time Switch..... 34

Motorized Cycle Times – Model C10 / C1135

Global Subject Matter Expert and Supplier of Aerial Delivery and Descent Solutions

COMPANY OVERVIEW

For over 140 years, Capewell has supported the U.S. military. Through continuous effort and innovation, we have become a global subject matter expert and supplier of aerial delivery and descent solutions, providing advanced, reliable equipment to the U.S. military, Allies, and partners worldwide. Since our founding in 1881, we have built a legacy of manufacturing high-quality products designed to perform flawlessly—first time, every time.

At Capewell, quality is the foundation of everything we do. Our products are designed and built to meet the highest industry standards, with rigorous quality controls in place to ensure consistent performance and reliability in accordance with our AS9100 and ISO 9001 quality management standards certifications, demonstrating our unwavering commitment to excellence in every aspect of our operations.

Capewell's extensive portfolio of cutting-edge systems is engineered to meet the evolving needs of today's military and defense operations. With a steadfast focus on innovation and customer satisfaction, we continue to deliver solutions that ensure mission success and operational readiness for those who depend on us most.

As we look ahead, we remain dedicated to developing the next generation of technologies that will shape the security landscape for years to come.

DOMAINS

- Engineering & Design
- Manufacturing Expertise
- Proprietary Product Lines

CORE COMPETENCIES

Capewell's core competencies stem from our deep domain experience in developing, manufacturing, and supporting high-reliability aerial delivery and emergency descent solutions that support military and commercial customers worldwide.



Certificates & Credentials

- Cage Code: 71304
- ISO 9001: 2015 Certified
- AS9100: 2016 Certified
- DUNS Number: 079338804
- FAA PMA: PQ1018NE
- Department of Defense Prime Contractor
- Department of Defense Approved Subcontractor
- Department of State Approved and Registered for Export
- IASME Cyber Essentials Certified
- Wide Area Workflow Capable
- Most of our products are 100% American Made & Berry Amendment Compliant

CORE STRENGTHS

- Solutions tailored for extreme environments, aerial delivery platforms & ancillary equipment, next-generation manned / unmanned aerial delivery
- CNC machining, precision assembly
- Parachute releases, Emergency Descent Devices (EDD), precision digital and mechanical timers
- Lifecycle Services & Support
- Mission-Driven Insight
- MRO services, repair, training and operational readiness programs
- Direct warfighter experience guiding product roadmap and execution

Products, Capabilities & Equipment

PRODUCTS

PERSONAL PARACHUTE EQUIPMENT

- Capewell Parachute Release
- Frost Ejection Seat Parachute Release
- Ripcords, Grips, and Pins

AERIAL DELIVERY EQUIPMENT

- Cargo Parachute Release Assemblies
- Airdrop Platforms
- Towplate Assemblies
- Buffer Stop Assemblies (BSA)
- Centerline Vertical Restraint System (CVRS)
- Extraction Force Transfer Coupling (EFTC)
- Universal Maritime Craft Aerial Delivery System (UMCADS)

EMERGENCY DESCENT DEVICES (EDD)

- C5 and KC46
- A300, A310, B747, B757, B767, B787, L-1011

COMMERCIAL TIMERS

- Mechanical Timers
- Cycle Timers (C10)
- Programmable Timers

CAPABILITIES

MACHINING

- 10- & 20-Ton Stamping Presses
- Rotary Swage Machine
- Induction Brazing
- Tumblers, Shotblasts, and Metal Finishing
- Vertical Milling size capacity to 150" x 32" x 30"; index to 32' on x-axis
- Horizontal Milling Center w/Pallet Pool size capacity to 22" x 25" x 22"
- CNC Turning w/Live Tooling and 8" Chuck, size capacity to 12" x 21"

AUTOMATION

- Robot to hold 7 kg (15.5 lbs) raw material

TEST EQUIPMENT / QUALITY ASSURANCE

- Instron Tensile Tester to 135,000 lbs
- EDD Velocity Tester
- Horizontal Tensile Tester
- CMM / Faro Arm / Scanner
- Standard Inspection Equipment
- Thermotron Environmental Tester

ENGINEERING & TESTING

- Design, Test, and Prototype
- 3D Printing
- Aerial Delivery Training (Load & Airdrop Customer Training)



EQUIPMENT LIST

CNC MILLING CENTERS

- Haas VF-12/40 VMC
- Haas VF-2SS VMC
- Mazak VTC-16 VMC
- Haas Mini Mill
- Haas VF-3SS VMC
- Haas VF-5SS VMC
- Haas VF-6 VMC
- Haas EC-400 Horizontal Milling Center w/Pallet Pool

INDEXING

- Haas HRT-160
- Haas HRT-210
- Haas HRT-3310
- Nikken Rotary Table

AUTOMATION

- Haas 7 kg (15.5 lbs) Robot

SUPPORT MACHINERY & EQUIPMENT

- 10-Ton RDS Presses
- 20-Ton RDS Presses
- Fenn Hydro former
- Fenn Rotary Swage Machines
- Induction Brazing Machine
- Epilog Laser Marking Machine
- Bandsaws, Bridgeport machines, engine lathe (shop support)
- Multiple specialty standard drill stations
- Grieve Oven
- HZ120 Centrifugal Barrel Tumbler Machine
- Conventional Tumblers
- Mefin Shotblast System

CNC TURNING

- Haas SL-20 Lathe w/Programmable Hydraulic Tailstock
- Haas ST-20Y Lathe w/Live Tooling & Programmable Hydraulic Tailstock

TESTING EQUIPMENT

- Instron tensile tester (to 135kp)
- Specialty parachute hardware testers
- Emergency Descent Device velocity tester
- Thermotron temperature chamber
- Horizontal tester
- Multiple optical comparators
- Multiple electronic height gages
- Multiple torque measurement devices
- Faro Arm
- Faro Scanner

The Capewell Parachute Release

LANYARD-TYPE PARACHUTE CANOPY RELEASE

The Capewell lanyard-type parachute canopy release is a hand activated mechanical device for detaching the parachute harness from the canopy. Its simple, intuitive operation offers paratroopers quick, safe disengagement from the canopy.

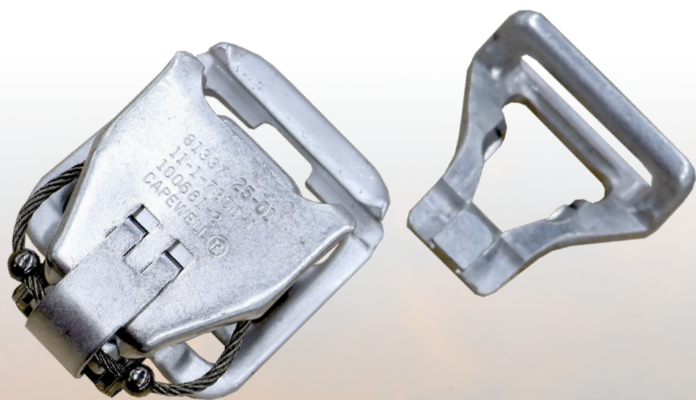


THE CAPEWELL PARACHUTE RELEASE IS U.S. GOVERNMENT APPROVED

The Capewell Release was developed in response to paratroopers' needs for a release that would quickly free them from the parachute canopy upon landing. The Capewell Release is utilized by the U.S. military, foreign militaries, and commercial customers worldwide.

SPECIFICATIONS AND QUALITY ASSURANCE

The Capewell Release is manufactured from drop forged steel and is constructed for superior strength and plated for increased corrosion resistance. The maximum rated load limit is 9000 pounds. Each component undergoes 100% inspection and each finished release is subjected to a 5000 pound (2268 kg) pull test. All parachute hardware is manufactured under stringent ISO 9001 quality control standards.



PART #	CANOPY RELEASE	WEIGHT (APPROX)
11-1-7350	FEMALE	8 oz. (227 g)
60J4328	MALE	4 oz. (113 g)



Frost Ejection Seat Parachute Release

THE FROST RELEASE IS U.S. GOVERNMENT APPROVED

The primary user of the Frost Parachute Release is the worldwide community of F-16 fighter aircraft, as well as the US Air Force F-22, B-1 and B-2. Additionally, it is used on many other aircraft including the T-6 A/B, the T-38, the AIDC F-CK-1, the Turkish F-5 and the Korean T-50.

PRODUCT FEATURES

- Releases easily even when pilot is being dragged across ground or through water
- Compatible with Universal Water Activated Release System (UWARS)
- Operates with less than 35 lbs. (15.9 kg) applied force
- Currently in use by US and foreign air forces
- Easy to retrofit to multiple configurations ejection seat mounted backpack style parachutes
- Conforms to USAF military specification: MIL-Q-87152
- Use with ACES II Ejection Seat and PCU-15/P Harness



PART #	NSN#	DESCRIPTION
81116 -10	1670-01-125-1527LS	Release Assembly (Fitted to pilot's torso harness)
81118 -10	1670-01-123-3878LS	Canopy Link Assembly (Fits on parachute release)

Emergency Descent Device (EDD)

FAA CERTIFIED GROUND EGRESS SOLUTION

CAPEWELL AERIAL SYSTEMS IS THE EXCLUSIVE WORLDWIDE SUPPLIER AND MANUFACTURER OF THE EMERGENCY DESCENT DEVICE (EDD)



The EDD provides a safe and rapid method of descent from an aircraft during an on-ground emergency situation requiring aircrew egress. The device is attached to the inside of the aircraft permitting two-hand descent. The internal centrifugal braking mechanism slows the descent to a safe rate.

The EDD was originally developed for the C-5A, and on February 28, 1997 Capewell obtained FAA Certification for commercial use of EDD's on aircraft manufactured by Boeing, Airbus and Lockheed. Since that time, Capewell has continued to introduce product improvements to maximize reliability and safety. In 2011, the Capewell EDD was FAA certified for use in the Boeing 747-8 and 787.

SPECIFICATIONS	
PART #	*379103D
† DESCENT DISTANCE	**20 to 46 ft. (5.1 to 14.2 m)
‡ VELOCITY AT END OF DESCENT	Less than 16 ft. per second (4.8 mps) after 20 ft.
OVERALL SIZE, STOWED	7 x 7.75 x 1.75 inches (177.8 x 196.9 x 12.3 mm)

APPLICABILITY	
MANUFACTURER	AIRCRAFT
BOEING	747-100, 747-SP, 747-200C, 747-200B, 747-200BC, 747-200F, 747-200PF, 747-300F, 747-300SUD, 747-400B, 747-400BC, 747-400D, 747-400F, 747-800, 757, 767, 787, KC-46
AIRBUS	A300-B4-103, A300-B4-203, A310-221, A310-222, A310-324, A310-325 Passenger-to-Freight (P2F): A320-232, A321-211, A321-231
LOCKHEED	L1011-385-1, L1011-385-1-14, L1011-385-1-15, L1011-385-3, C5



- * Note: 379103C is replaced by 379103D
- ** Note: As Specified By Customer
- † Note: Specified distance should be greater than expected maximum descent
- ‡ Note: Descent velocity varies with user weight and length of descent

The design of the Emergency Descent Device (EDD) is a registered trademark of Capewell.



Emergency Descent Device (EDD) Rebuild Service

Capewell Aerial Systems certifies each EDD to conform to all required specifications for a five-year period or one use, whichever comes first. Each EDD must be returned to Capewell Aerial Systems for rebuild, test and re-certification every five (5) years, or after use.

This certification is applicable to EDDs rebuilt at Capewell Aerial Systems LLC and EDDs transferred from the original purchaser to another airline, but is void in event of abuse, misuse, damage sustained after shipment from the factory, or disassembly unauthorized by Capewell Aerial Systems, LLC and in no circumstance shall the latter be liable for consequential damages.



Per Advisory Circular AC No: 20-62E issued by the U.S. Department of Transportation Federal Aviation Administration (FAA) on September 14, 2018, only the Parts Manufacturer Approval (PMA) holder is authorized to perform rebuilds and overhaul of its part.

CAPEWELL AERIAL SYSTEMS IS THE ONLY PMA HOLDER FOR THE EMERGENCY DESCENT DEVICES, PART NUMBER 379103D-XX.

Please be aware of unapproved repair facilities performing unauthorized service to a Capewell Aerial Systems EDD. To avoid this situation, email customer.service@capewell.com for all EDD related questions and to arrange your EDD rebuild service. Non-compliance could be detrimental to the safety of the operator's crew.



Type V Aerial Delivery Platform

TYPE V HEAVY DUTY EXTRUDED ALUMINUM AIRDROP PLATFORM

The Type V Heavy Duty Extruded Aluminum Airdrop Platform was developed by the U.S. Department of Defense to replace the A/E 29H-1 (LAPES) and the Type II (LVAD) airdrop platforms. Because of its durability and survivability, it is now used in the U. S. and other nations without modifications for low velocity airdrops from all cargo aircraft types equipped with the 463L-type rail cargo handling system (A400M, C-130, C-2, C-5, C-17, C-27], C-390, and CN-295). The platform is available in vented and nonvented configurations.



ADVANTAGES

Modular design ensures ease of logistical support and maximum adaptability to mission requirements by providing seven different platform lengths. Replaced both Type II and Type IV platforms in the U.S. inventory and most Aerial Delivery Operators worldwide. Main panels are constructed of 6061-T6 aircraft grade aluminum in a vertical web design plus an interlocking joint between panels, providing exceptional strength and resistance to bending. Single point platform extraction of up to 42,000 lbs. (19,051 kg) payloads. Interfaces with cargo aircraft equipped with either 88 inch (223.5 cm) or 108 inch (274 cm) wide cargo handling systems. Roller pads interface with floor mounted roller conveyor systems providing additional strength while protecting the underside of the platform. Designed to accommodate future advances in airdrop technology.

COMPONENTS

- Main Panels
- Rear Panels
- Roller Pads
- Tie Down Clevises*
- Side Rails
- EFTA Brackets
- Tandem Links
- Suspension Links
- Nose Bumper* (LAPES)
- Extraction Bracket (LVAD)
- Panel Tiedown Rings

TECHNICAL REFERENCES

- Technical Manual 10-1670-268-20&P
- Technical Manual 4-48.2

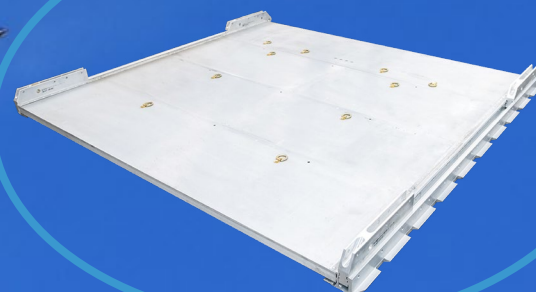
*optionally quoted item



TYPE V PLATFORMS		
PART #	LENGTH	NSN
108 INCHES WIDE		
11-1-2780-1	8 FT	1670-01-594-9400
11-1-2780-2	12 FT	1670-01-530-0985
11-1-2780-3	16 FT	1670-01-530-0986
11-1-2780-4	20 FT	1670-01-550-6787
11-1-2780-5	24 FT	1670-01-550-6786
11-1-2780-6	28 FT	1670-01-550-6788
11-1-2780-7	32 FT	1670-01-550-6789
88 INCHES WIDE		
C97-2780-88-1	8 FT	
C97-2780-88-2	12 FT	
C97-2780-88-3	16 FT	
C97-2780-88-4	20 FT	
C97-2780-88-5	24 FT	
C97-2780-88-6	28 FT	
C97-2780-88-7	32 FT	

Type V Aerial Delivery Platform

11-1-2780 (Rev U) PLATFORM, AIRDROP TYPE V											
PART LISTING FOR TYPE V PLATFORMS		SIZE	8'	12'	16'	20'	24'	28'	32'		
		DASH NUMBER	-1	-2	-3	-4	-5	-6	-7		
NSN	PART NUMBER	DESCRIPTION	QTY	QTY	QTY	QTY	QTY	QTY	QTY		
1670-01-168-8398	11-1-2781-1	REAR PANEL ASSY	1	1	1	1	1	1	1		
1670-01-168-8397	11-1-2781-2	MAIN PANEL ASSY	3	5	7	9	11	13	15		
1670-01-162-2371	11-1-2793-1	SIDE RAIL 8'	2								
1670-01-162-2370	11-1-2793-2	SIDE RAIL 12'		2							
1670-01-162-2369	11-1-2793-3	SIDE RAIL 16'			2						
1670-01-162-2368	11-1-2793-4	SIDE RAIL 20'				2					
1670-01-162-2366	11-1-2793-5	SIDE RAIL 24'					2				
1670-01-162-2367	11-1-2793-6	SIDE RAIL 28'						2			
1670-01-162-9174	11-1-2793-7	SIDE RAIL 32'							2		
1670-01-162-2386	11-1-2795-1	ROLLER PAD 8'	4								
1670-01-162-2383	11-1-2795-2	ROLLER PAD 12'		4							
1670-01-162-2382	11-1-2795-3	ROLLER PAD 16'			4						
1670-01-162-2387	11-1-2795-4	ROLLER PAD 20'				4					
1670-01-162-2388	11-1-2795-5	ROLLER PAD 24'					4				
1670-01-162-2389	11-1-2795-6	ROLLER PAD 28'						4			
1670-01-162-2385	11-1-2795-7	ROLLER PAD 32'							4		
1670-01-162-2381	11-1-2798-1	TANDEM LINK ASSY	4	4	4	4	4	4	4		
1670-01-247-2389	11-1-2798-2	SUSPENSION LINK ASSY				4	4	4	4		
1670-01-247-2376	11-1-2871	EXTRACTION BRACKET ASSY	1	1	1	1	1	1	1		
HARDWARE KIT INCLUDES											
1670-01-162-2374	11-1-3175	OUTSIDE BRACKET EFTA	1	1	1	1	1	1	1		
1670-01-162-2375	11-1-2872	INSIDE BRACKET EFTA	1	1	1	1	1	1	1		
5365-01-162-2384	11-1-2792	SIDE RAIL BUSHINGS	32	48	64	80	96	112	128		
5306-00-638-7718	AN8-31A	BOLT .500-20 (SIDE RAIL)	32	48	64	80	96	112	128		
5306-01-140-6356	B1821BH038F125L	HEXHD SCREW .375-24UNF-2A X 1.25 LG (ROLLER PAD)	64	96	128	160	192	224	256		
5306-00-180-1489	AN6-17A	BOLT .375-24 (BRACKET, EFTA)	2	2	2	2	2	2	2		
5306-01-076-3146	AN17-26	BOLT, 1.000-12 (TAND LINK)	2	2	2	2	2	2	2		
5306-00-527-4240	AN10-36A	BOLT, .625-18 (EXTRACTION BKT)	4	4	4	4	4	4	4		
5310-00-057-7151	MS21044-N16	NUT, SELF LK 1.000-12	2	2	2	2	2	0	0		
5310-00-950-0039	MS21044-N6	NUT, SELF LK .375-24	2	2	2	2	2	2	2		
5310-00-982-6809	MS21044-N10	NUT, SELF LK .625-18	4	4	4	4	4	4	4		
5310-00-167-0821	NAS1149F0663P	WASHER, FLAT .390 ID	68	100	132	164	196	224	260		
5310-01-396-8392	NAS1149F0863P	WASHER, FLAT .515 ID	32	48	64	80	96	112	128		
5310-01-408-2779	NAS1149F1063P	WASHER, FLAT .640 ID	8	8	8	8	8	8	8		
5310-01-397-1798	NAS1149F1690P	WASHER, FLAT 1.015 ID	4	4	4	4					
1670-01-162-9156	11-1-2780-10	NOSE BUMPER COMPONENT ASSY	QUOTE ON REQUEST								
1670-01-162-2372	11-1-2801	CLEVIS ASSY	QUOTE ON REQUEST								



Type V Sub-system Assemblies

PART NO: 11-1-2780-8 PANEL, MAIN-COMPONENT ASSEMBLY

NSN 1670-01-304-3006

QTY REQ'D	PN	NOMENCLATURE OR DESCRIPTION
1	11-1-2781-2	PANEL, ASSEMBLY MAIN
8	11-1-2792	BUSHING, SIDE RAIL
8	AN8-31A	BOLT, MACH HEX HD, .500-20UNF-3A X 3.21
16	B1821BH038F125L	SCREW, CAP, HEX HD, SELF-LOCKING, ZINC COATED, .375-24UNF-2A X 1.25" LG PER ANSI B18.2.1
8	NAS1149F0863P	WASHER, FLAT. 515 ID
16	NAS1149F0663P	WASHER, FLAT. 390 ID

PART NO: 11-1-2780-9 PANEL, REAR-COMPONENT ASSEMBLY

NSN 1670-01-304-1057

QTY REQ'D	PN	NOMENCLATURE OR DESCRIPTION
1	11-1-2781-1	PANEL, ASSEMBLY REAR
8	11-1-2792	BUSHING, SIDE RAIL
8	AN8-31A	BOLT, MACH HEX HD, .500-20UNF-3A X 3.21
16	B1821BH038F125L	SCREW, CAP, HEX HD, SELF-LOCKING, ZINC COATED, .375-24UNF-2A X 1.25" LG PER ANSI B18.2.1
8	NAS1149F0863P	WASHER, FLAT .515 ID
16	NAS1149F0663P	WASHER, FLAT .390 ID

PART NO: 11-1-2780-10 NOSE BUMPER COMPONENT ASSEMBLY

NSN 1670-01-353-8423

QTY REQ'D	PN	NOMENCLATURE OR DESCRIPTION
1	11-1-2797	NOSE BUMPER
3	AN-632A	BOLT, MACH HEX HD .375-24UNF-3A X 3.32
6	NAS1149F0663P	WASHER, FLAT .390 ID
3	MS21044-N6	NUT, HEX SELF-LOCKING .375-24UNJF-3B

PART NO: 11-1-2780-11 EXTRACTION BRACKET COMPONENT ASSEMBLY

NSN 1670-01-353-8424

QTY REQ'D	PN	NOMENCLATURE OR DESCRIPTION
1	11-1-2871	EXTRACTION BRACKET ASSEMBLY
4	AN10-36A	BOLT, MACH HEX HD, .625-18UNF-3A X 3.89
4	MS21044-N10	NUT HEX SELF-LOCKING .625-18UNJF-3B
8	NAS1149F1063P	WASHER, FLAT .64 ID

PART NO: 11-1-2780-12 EFTA BRACKET COMPONENT ASSEMBLY

NSN 1670-01-353-8425

QTY REQ'D	PN	NOMENCLATURE OR DESCRIPTION
1	11-1-3175	BRACKET, OUTSIDE, EFTA
1	11-1-2872	BRACKET, ASSEMBLY, INSIDE, EFTA
2	AN6-17A	BOLT, MACH HEX HD .375-24UNF-3A X 1.95
4	NAS1149F0663P	WASHER, FLAT .390 ID
2	MS21044-N6	NUT, HEX SELF-LOCKING .375-24UNJF-3B



Aerial Delivery Cargo Parachute Release Assemblies – M1 / M2

AERIAL DELIVERY CARGO PARACHUTE RELEASE ASSEMBLIES

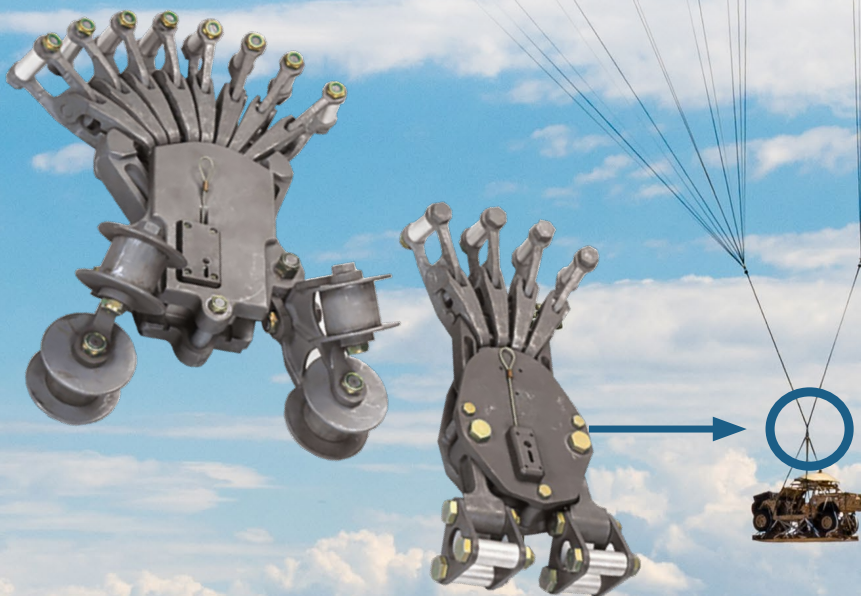
Parachute release assemblies separate parachutes from loads after touchdown. All releases operate on a tilt-action principle: as the load touches down, the parachutes fall to the side, tilting the release. This motion causes toggle parts within the release assemblies to release the parachutes, preventing loads from overturning or dragging. Each release is also equipped with a timer assembly and trigger mechanism to prevent premature separation.

FEATURES AND BENEFITS

- Separates the parachutes from the load after touchdown
- Works on a tilt-action principle causing release of the parachutes on touchdown
- Equipped with timer assembly and triggering device to prevent premature release



SPECIFICATIONS		
TYPE	M1	M2
PART NUMBER	11-1-1487-2	11-1-565-2
NSN	1670-01-097-8818	1670-01-097-8817
SIZE	3.5 x 8 x 14 (inches)	17 x 8 x 21 (inches)
CARGO RELEASE UNIT WEIGHT MAX	41 lbs	73 lbs
SUSPENDED LOAD	2,270 - 15,000 lbs	15,001 - 42,000 lbs
# OF PARACHUTES	1 to 3: G-11 (100' dia) 2: G-12 (64' dia)	4 to 8: G-11 (100' dia)



Extraction Force Transfer Coupling (EFTC)

THE EXTRACTION FORCE TRANSFER COUPLING (EFTC) ASSEMBLY

The Extraction Force Transfer Coupling (EFTC) Assembly is designed to transfer the pull force of the extraction parachute from platform extraction to deployment of the main cargo parachute.

The Extraction Force Transfer Actuator (EFTA) is mounted in the Inside and Outside Bracket Assembly attached to the left side of the platform.

The EFTA is connected to the EFTC Latch Assembly via a control cable. Activation of the cable operates the Latch Assembly, releasing the Link Assembly, initiating force transfer.



EFTC ASSEMBLIES		
PART #	NSN	CABLE LENGTH
11-1-2060-1	1670-00-434-5783	12 FT
11-1-2060-2	1670-00-434-5785	16 FT
11-1-2060-3	1670-00-434-5787	20 FT
11-1-2060-4	1670-00-434-5782	24 FT
11-1-2060-5	1670-01-326-7309	28 FT

EFTC COMPONENTS		
PART #	NSN	CABLE LENGTH
11-1-1715-1	1670-00-162-4981	LINK ASSEMBLY
11-1-1725	1670-01-470-3696	LATCH ASSEMBLY, COUPLING
11-1-1737	1670-01-182-1979	ACTUATOR ASSEMBLY
11-1-3924	1670-01-470-8333	LATCH ASSEMBLY, CONNECTOR
11-1-1721*	1670-00-162-4979	ADAPTER ASSEMBLY, LINK

*Only used on 11-1-2060-4 & 11-1-2060-5 EFTC Assemblies

EFTC CABLE ASSEMBLIES		
PART #	NSN	CABLE LENGTH
11-1-2061-1	1670-00-434-5797	12 FT
11-1-2062-2	1670-00-434-5798	16 FT
11-1-2062-3	1670-00-434-5795	20 FT
11-1-2062-4	1670-00-434-5796	24 FT
11-1-2062-5	1670-00-157-6527	28 FT

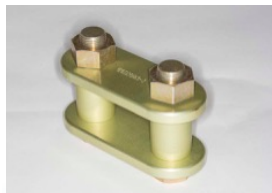


Aerial Delivery Ancillaries

CAPEWELL OFFERS A SUITE OF AERIAL DELIVERY ANCILLARIES USED ON CARGO AIRDROP PLATFORMS.



**8 Spool
Load Coupler**
11-1-66-1
1670-799-8596



**3 3/4 Inch
Twin Link**
11-1-7026-1
1670-01-493-6418



**5 1/2 Inch
2-Point Link**
11-1-7026-2
1670-01-493-6420



**Clevis,
Medium, 3/4 Inch**
MS70087-2
4030-00-678-8562



**Clevis,
Large, 1 1/8 Inch**
MS70087-3
4030-00-090-5354



Suspension Slings & Extraction Lines



68F217 PART NUMBER SERIES THAT USE TYPE XXVI NYLON WEBBING

PART #	NSN	LENGTH	PLIES	LOOPS/PIN	LBS TEST LOAD
68F217-22	1670-01-063-7761	16 FT	4	2	44,500
68F217-30	1670-01-062-6313	60 FT	6	3	67,500
68F217-32	1670-01-064-4454	60 FT	12	6	135,000
68F217-33	1670-01-062-6312	120 FT	12	6	135,000
68F217-41	1670-01-062-6311	120 FT	4	2	44,500
68F217-45	1670-01-064-4452	60 FT	2	1	22,250
68F217-47	1670-01-064-4451	36 FT	2	1	22,250
68F217-48	1670-01-062-6301	3 FT	4	2	44,500
68F217-49	1670-01-062-6304	9 FT	4	2	44,500
68F217-50	1670-01-062-6303	12 FT	4	2	44,500
68F217-51	1670-01-062-6302	20 FT	4	2	44,500
68F217-52	1670-01-062-6306	3 FT	8	4	89,000
68F217-53	1670-01-062-6305	9 FT	8	4	98,000
68F217-54	1670-01-062-6307	12 FT	8	4	89,000
68F217-55	1670-01-062-6308	16 FT	8	4	89,000
68F217-56	1670-01-064-4453	20 FT	8	4	89,000
68F217-57	1670-01-062-6309	28 FT	8	4	89,000
68F217-58	1670-01-063-7760	11 FT	4	2	44,500
68F217-59	1670-01-062-6310	11 FT	8	4	89,000
68F217-60	1670-01-107-7651	140 FT	6	3	67,500
68F217-61	1670-01-107-7652	160 FT	2	1	22,250
68F217-62	1670-01-468-9178	140 FT	12	6	135,000
68F217-63	1670-01-675-5475	80 FT	4	2	44,500

SUSPENSION SLINGS

Suspension slings are also known as "Line, multi-loop," and are concentric loop-type lines.



16 ft Riser



20 ft 4 Loop



3 ft 4 Loop



9 ft Sling

Centerline Vertical Restraint System (CVRS)

THE CENTERLINE VERTICAL RESTRAINT SYSTEM (CVRS) BY CAPEWELL IS EFFECTIVE, EASY TO INSTALL AND COMBAT-PROVEN



The CVRS is designed for use on the C-130 aircraft to provide vertical and lateral restraint of Container Delivery System (CDS) containers during flight and through- out the airdrop phase. The CVRS permits the airdrop of up to twelve A-22 containers from each side of the aircraft. Each container can be rigged and airdropped in a single pass, for a total of 24 individual containers, or all 24 can be airdropped simultaneously. The CVRS was designed to accommodate 48" plywood skidboards; however, 48"x 53.5" and 48"x 96" plywood skidboards may be airdropped with the CVRS installed by rotating the skidboard(s) 90 degrees to allow the 48" side to fit between the CVRS and the aircraft dual rails. The CVRS uses the existing tiedown rings in the aircraft and provides a similar set of tiedown rings as replacement.

No special tools are required to install the CVRS. A team of two people can install or remove the CVRS in less than 30 minutes.

The CVRS delivers ease of operation and proven reliability in combat situations. This system is widely used by the US Military and allied nations worldwide.



PART #	AIRCRAFT	VERSION
C2385120100-10	C-130 E/H/J	STANDARD C-130
C2385120100-20	C-130 E/H/J	STRETCHED C-130



Buffer Stop Assembly (BSA) – C130H / C130J

THE BUFFER STOP ASSEMBLY IS EFFICIENT, EASY TO INSTALL AND COMBAT PROVEN

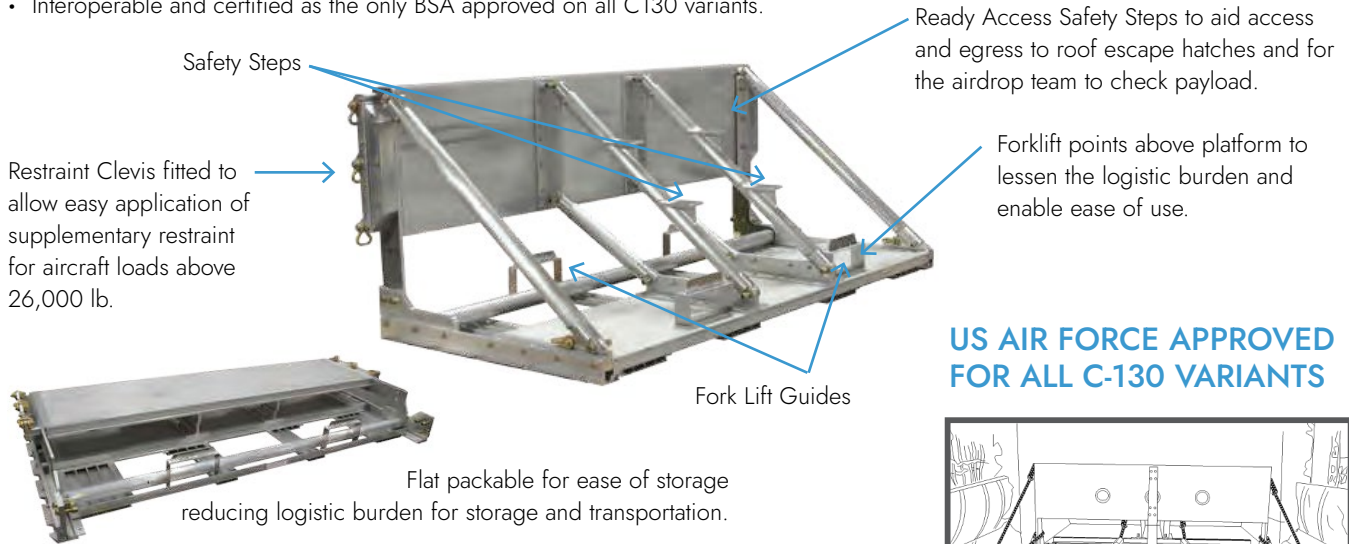
The Buffer Stop Assembly (BSA) provides 3G's of forward restraint for up to 24 A-22 containers rigged to a maximum weight of 37,248 pounds for a Container Delivery System (CDS) C-130 airdrop mission.



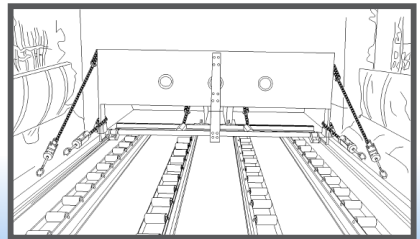
SAFETY STEPS ENHANCE LOADMASTER MOBILITY AND SAFETY

The 108" design is USAF approved for all C-130 variants as well as a variety of other cargo aircraft. The BSA rolls into the cargo compartment and locks into the -4A cargo restraint system. Roller Pads stop roller indentation.

- The BSA is easily loaded and unloaded by forklift using the heavy-duty forklift guides.
- Only provided by Capewell in accordance with US 6,568,636 B2.
- Interoperable and certified as the only BSA approved on all C130 variants.



US AIR FORCE APPROVED FOR ALL C-130 VARIANTS



PART #	NSN	WEIGHT	CAPACITY	U.S. PATENT
C98-2100-4	1670-01-623-3591	650 LBS	37,248 LBS	6568636 - BUFFER STOP



Next Generation Aerial Delivery System (NGADS)

FIRST FOR COMMONALITY, FIRST FOR MODULARITY, FIRST FOR INTEROPERABILITY

For decades, the U.S. DOD and its Allies have had to use bespoke AD platform solutions for different applications, or enhancements to the proven universal Type V have been produced in low volumes by multiple manufacturers. Our Next Generation Aerial Delivery Systems (NGADS) portfolio brings a range of AD capabilities under one universal design solution utilizing the proven, NATO-standard Type V platform aircraft interfaces, ancillaries, and parachutes.

Developed in stages, NGADS is mission ready to deploy crewed and uncrewed maritime watercraft and land vehicles into contested operational areas. Near future, soft-landing technologies will be assessed and integrated onto the land system to enhance operational utility.



Scan the QR Code to watch our NGADS video

MISSION READY INCLUDING:

- Boomeranger
- Kraken
- Zodiac
- The Whiskey Project Group
- UK MoD LBAD boats RPC, LPB, MIC-M & MIC-H

MISSION READY

- Subsea Craft Victa
- JFD Seal Carrier
- MSubs UUV

IN DEVELOPMENT

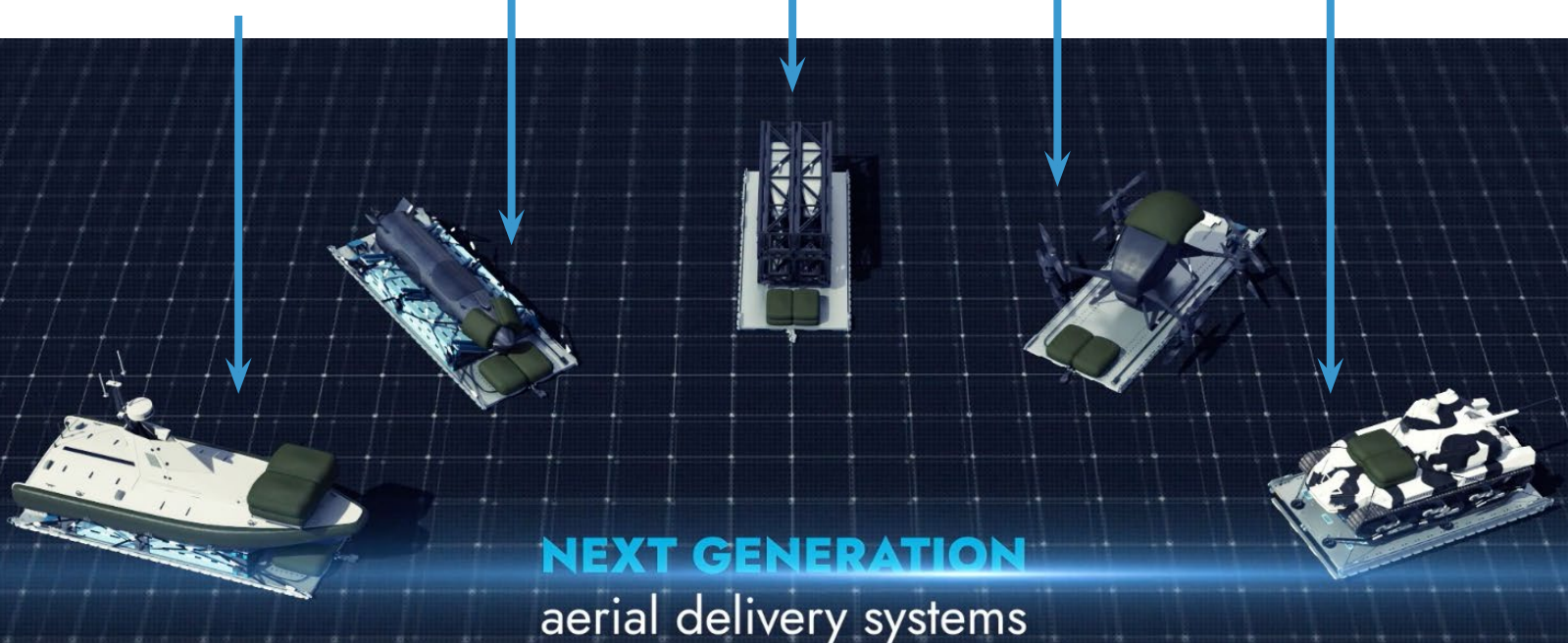
- Joint development program with payload and enabling OEMs underway; including flight trials

IN DEVELOPMENT

- Joint conceptual development program with payload and enabling OEMs

MISSION READY

- Thousands of USDOD certified payloads using mission ready Type V platform rigging schemes. Enhanced shock attenuation in development



NEXT GENERATION aerial delivery systems

Universal Maritime Craft Aerial Delivery System (UMCADS)

ADAPTED FOR USE WITH A WIDE RANGE OF CRAFT

UMCADS enables the warfighter to safely deploy their watercraft and equipment tactically at range, day or night. Provided as a system by Capewell inclusive of parachutes, ancillaries, and user training. With a global reputation for premium quality and the most reliable aerial delivery products, Capewell has developed an assured aerial delivery system that enables mission success.

FEATURES AND BENEFITS

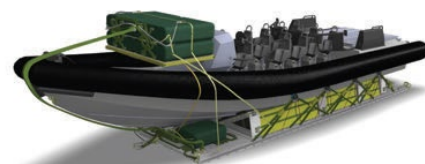
- Modular with commensurate payload clearances for in-service NATO Type V platform for watercraft up to 12.5m in length and 42,000lb [19,050 kg] AUM, subject to engineering analysis. Watercraft larger than 12.5m in length will be assessed on a case-by-case basis
- Universally capable and adaptable (interoperable with land, maritime and air releasable payloads)
- Universally compatible with C17, C130, A400M, KC390 and C2 aircraft
- 100% reusable and user operated, serviced, and maintained
- Unique patent pending features*



Actual UMCADS Platform



EXAMPLES OF UMCADS COMPATIBLE & CONFIGURED CRAFT



Boomeranger – Air Drop RHIB



SubSea Craft VICTA



Kraken – K3 Scout



Whiskey Project Group – Alpha

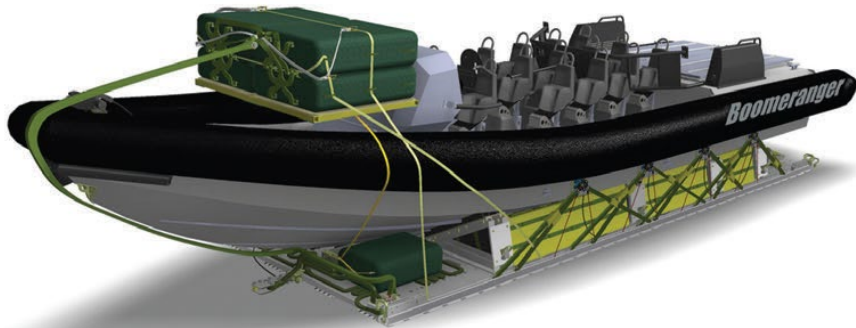


Zodiac MilPro – RHIB

* The following patent applications are currently pending before the United States Patent and Trademark Office (USPTO), and are entitled, "Universal Maritime Craft Aerial Delivery System (UMCADS)," (Application No. 18/165,585 and Application No. PCT/US23/62125, respectively, both filed 7 February 2023) and "Mid-Air Release Module Assembly," (Application No. 18/393,115 and Application No. PCT/US23/85525, respectively, both filed December 21, 2023).

Universal Maritime Craft Aerial Delivery System (UMCADS)

UMCADS CONFIGURED WITH BOOMERANGER AERIAL DELIVERY RHIB



UMCADS

UMCADS is just one system from the Capewell Next Generation Aerial Delivery System (NGADS) portfolio. The system enables the warfighter to safely deploy their watercraft and equipment tactically at range, day or night. Capewell provides a system inclusive of parachutes, ancillaries, and user training. With a global reputation for premium quality and the most reliable aerial delivery products, Capewell has developed an assured aerial delivery system that enables mission success.

BENEFITS

- Modular with commensurate payload clearances for in-service NATO Type V platform for watercraft up to 12.5m in length and 42,000lb [19,050 kg] AUM, subject to engineering analysis. Watercraft larger than 12.5m in length will be assessed on a case-by-case basis
- Universally capable and adaptable (interoperable with land, maritime and air releasable payloads)
- Universally compatible with C17, C130, A400M, KC390 and C2 aircraft
- 100% reusable and user operated, serviced, and maintained
- Unique patent pending features*

* The following patent applications are currently pending before the United States Patent and Trademark Office (USPTO), and are entitled, "Universal Maritime Craft Aerial Delivery System (UMCADS)," (Application No. 18/165,585 and Application No. PCT/US23/62125, respectively, both filed 7 February 2023) and "Mid-Air Release Module Assembly, (Application No. 18/393,115 and Application No. PCT/US23/85525, respectively, both filed December 21, 2023).

BOOMERANGER ADR TECHNICAL SPECIFICATIONS

- Material: Composite
- Length: Up to 12m
- Beam (Inflated): 3.5m
- Beam (Deflated for transport): 2.7m
- Max speed full load: 50kn
- Operating range: >250NM
- Fuel tank size: 1,150l
- Engines: Customer specified - Outboard / Waterjet



Boomeranger Boats Oy
Troolite 12, FI-07910 Valko, Finland
Business ID FI08606998

Boomeranger
SAFE RETURNS

21. Capewell
105 Nutmeg Road South, South Windsor, CT 06074
860.610.0700 | sales@capewell.com

CAPEWELL
A HEICO COMPANY

Universal Maritime Craft Aerial Delivery System (UMCADS)

UMCADS CONFIGURED WITH "VICTA", SUBSEA CRAFT'S DUAL DOMAIN CRAFT THAT DELIVERS OPERATORS, PAYLOAD AND EFFECTS INTO CONTESTED ENVIRONMENTS



UMCADS

UMCADS is just one system from the Capewell Next Generation Aerial Delivery System (NGADS) portfolio. The system enables the warfighter to safely deploy their watercraft and equipment tactically at range, day or night. Capewell provides a system inclusive of parachutes, ancillaries, and user training. With a global reputation for premium quality and the most reliable aerial delivery products, Capewell has developed an assured aerial delivery system that enables mission success.

BENEFITS

- Modular with commensurate payload clearances for in-service NATO Type V platform for watercraft up to 12.5m in length and 42,000lb [19,050 kg] AUM, subject to engineering analysis. Watercraft larger than 12.5m in length will be assessed on a case-by-case basis
- Universally capable and adaptable (interoperable with land, maritime and air releasable payloads)
- Universally compatible with C17, C130, A400M, KC390 and C2 aircraft
- 100% reusable and user operated, serviced, and maintained
- Unique patent pending features*

VICTA PLATFORM

Surface Endurance:	250 nm
Surface Speed:	40 kts
Transition Time:	2 minutes
Subsurface Speed:	6 kts
Subsurface Endurance:	25 nm
Crew:	2
Operators:	6
More: Fits within a 40ft ISO container and weighs under 9.5 t	

VICTA KEY FEATURES

Digital Control System

- Ease of use: Reduce the cognitive burden
- Future proofed: Ensure technology superiority
- Control: Manned, Remote & Autonomous

Discrete Maritime Operations

- Force packaged: Independent or in company
- Over the Horizon (OTH) Asset
- Optimized for MUM-T operations

Operation Centric Design

- Customizable User Interface.
- Haptically enabled piloting
- Scientifically proven, performance preserving seats

* The following patent applications are currently pending before the United States Patent and Trademark Office (USPTO), and are entitled, "Universal Maritime Craft Aerial Delivery System (UMCADS)," (Application No. 18/165,585 and Application No. PCT/US23/62125, respectively, both filed 7 February 2023) and "Mid-Air Release Module Assembly," (Application No. 18/393,115 and Application No. PCT/US23/85525, respectively, both filed December 21, 2023).



SubSea Craft
The Camber, East St, Old Portsmouth,
Portsmouth, PO1 2JJ, United Kingdom



Universal Maritime Craft Aerial Delivery System (UMCADS)

UMCADS CONFIGURED WITH KRAKEN K3 SCOUT UNMANNED SURFACE VESSEL



UMCADS

UMCADS is just one system from the Capewell Next Generation Aerial Delivery System (NGADS) portfolio. The system enables the warfighter to safely deploy their watercraft and equipment tactically at range, day or night. Capewell provides a system inclusive of parachutes, ancillaries, and user training. With a global reputation for premium quality and the most reliable aerial delivery products, Capewell has developed an assured aerial delivery system that enables mission success.

BENEFITS

- Modular with commensurate payload clearances for in-service NATO Type V platform for watercraft up to 12.5m in length and 42,000lb [19,050 kg] AUM, subject to engineering analysis. Watercraft larger than 12.5m in length will be assessed on a case-by-case basis
- Universally capable and adaptable (interoperable with land, maritime and air releasable payloads)
- Universally compatible with C17, C130, A400M, KC390 and C2 aircraft
- 100% reusable and user operated, serviced, and maintained
- Unique patent pending features*

K3 SCOUT PLATFORM

Length Overall	8.4m
Beam Overall	1.9m
Draft Overall	0.8m
Max Displacement	2,500kg
Powertrain	Twin Diesel - Stern Drive
Max Speed	50kt
Range	650NM at 30kts
Endurance	30 days - mission dependent
Crew	Autonomous
Structure	Composite
Payload	600kg
Operating Dept	Surface

K3 SCOUT FEATURES

Reduced signature design

- End-user configurable modular payload
- Autonomous and advanced remote operation
 - Auterion operating system
 - Open interfaces to autonomy
- User defined C5ISR fit (optional)
- K3 SCOUT Heavy, Electric and RHIB options
- Pilot Module (optional)
- Sensors
 - EO
 - Radar
 - Sonar (optional)



* The following patent applications are currently pending before the United States Patent and Trademark Office (USPTO), and are entitled, "Universal Maritime Craft Aerial Delivery System (UMCADS)," (Application No. 18/165,585 and Application No. PCT/US23/62125, respectively, both filed 7 February 2023) and "Mid-Air Release Module Assembly," (Application No. 18/393,115 and Application No. PCT/US23/85525, respectively, both filed December 21, 2023).

Kraken Technologies Ltd.
 Uk House, 4th Floor, 164-182 Oxford Street,
 London, W1D 1NN, United Kingdom

KRAKEN

Universal Maritime Craft Aerial Delivery System (UMCADS)

UMCADS CONFIGURED WITH ZODIAC MILPRO RHIB



UMCADS

UMCADS is just one system from the Capewell Next Generation Aerial Delivery System (NGADS) portfolio. The system enables the warfighter to safely deploy their watercraft and equipment tactically at range, day or night. Capewell provides a system inclusive of parachutes, ancillaries, and user training. With a global reputation for premium quality and the most reliable aerial delivery products, Capewell has developed an assured aerial delivery system that enables mission success.

BENEFITS

- Modular with commensurate payload clearances for in-service NATO Type V platform for watercraft up to 12.5m in length and 42,000lb [19,050 kg] AUM, subject to engineering analysis. Watercraft larger than 12.5m in length will be assessed on a case-by-case basis
- Universally capable and adaptable (interoperable with land, maritime and air releasable payloads)
- Universally compatible with C17, C130, A400M, KC390 and C2 aircraft
- 100% reusable and user operated, serviced, and maintained
- Unique patent pending features*

ZODIAC MILPRO SPECIFICATIONS

- Hull Fabrication Material: Aluminum or Composite
- Length Overall**: From 6 to 13 m
- Width Overall**: Custom Build
- Speed Capability**: Up to 70 knots
- Typical Lightship Weight**: Custom Build
- Maximum Displacement: Custom Build
- Maximum Number of Persons**: Custom Build
- Maximum Power Installation: outboard, Inboard, Propeller,
- Sterndrive, Surface drive Waterjet

(**) Vary with configuration

* The following patent applications are currently pending before the United States Patent and Trademark Office (USPTO), and are entitled, "Universal Maritime Craft Aerial Delivery System (UMCADS)," (Application No. 18/165,585 and Application No. PCT/US23/62125, respectively, both filed 7 February 2023) and "Mid-Air Release Module Assembly, (Application No. 18/393,115 and Application No. PCT/US23/85525, respectively, both filed December 21, 2023).



Zodiac MilPro
55 bis rue de Lyon
75012 Paris, FRANCE



Universal Maritime Craft Aerial Delivery System (UMCADS)

UMCADS CONFIGURED WITH MULTI-MISSION RECONNAISSANCE CRAFT FROM THE WHISKEY PROJECT GROUP



UMCADS

UMCADS is just one system from the Capewell Next Generation Aerial Delivery System (NGADS) portfolio. The system enables the warfighter to safely deploy their watercraft and equipment tactically at range, day or night. Capewell provides a system inclusive of parachutes, ancillaries, and user training. With a global reputation for premium quality and the most reliable aerial delivery products, Capewell has developed an assured aerial delivery system that enables mission success.

	MMRC ALPHA	MMRC BRAVO
Hull length:	30.54 ft 9.31 m	35.4 ft 10.78 m
Length overall:	32.71 ft 9.97 m	38.9 ft 11.85 m
Beam overall	8.11 ft 2.74 m	9.8 ft 3.00 m
Max load:	4436 lbs 2012 kg	5182 lbs 2350 kg
Displacement lightship:	6490 kg 14308 lbs	13671 lbs 6200 kg
Max. displacement:	tba	22381 lbs 10150 kg
Draft:	tbc	2.9 ft 0.89 m
Max draft:	2.36 ft 0.721 m	4.0 ft 1.22 6m
Pax/crew:	10	17
Fuel capacity:	185 gal 700 L	422 gal 1600 L
Engines:	2 x OXE 300 HP Turbo Diesel Outboard	2 x CIMMINS QSB-6.7 550 HP Engines with TwinDisc transmissions
Drive system:		2 x KONRAD 680B Stern Drives
Hull form:	Sea Blade Ultra Deep V	Sea Blade Ultra Deep V
Hull construction:	Aluminum	Carbon Composite
Survey class:	USCG 46 CFR 170.150 & USCG 46 C FR 170.170, ISO 12217-1 Category C & B stability and DNVGL-ST-0342	USCG 46 CFR 170.150 ISO 12217-1 DNVGL-ST-0342



BENEFITS

- Modular with commensurate payload clearances for in-service NATO Type V platform for watercraft up to 12.5m in length and 42,000lb [19,050 kg] AUM, subject to engineering analysis. Watercraft larger than 12.5m in length will be assessed on a case-by-case basis
- Universally capable and adaptable (interoperable with land, maritime and air releasable payloads)
- Universally compatible with C17, C130, A400M, KC390 and C2 aircraft
- 100% reusable and user operated, serviced, and maintained
- Unique patent pending features*

* The following patent applications are currently pending before the United States Patent and Trademark Office (USPTO), and are entitled, "Universal Maritime Craft Aerial Delivery System (UMCADS)," (Application No. 18/165,585 and Application No. PCT/US23/62125, respectively, both filed 7 February 2023) and "Mid-Air Release Module Assembly, (Application No. 18/393,115 and Application No. PCT/US23/85525, respectively, both filed December 21, 2023).



The Whiskey Project Group HQ:
Belrose NSW 2085, Australia
The Whiskey Project Group USA:
Edenton, North Carolina, USA

THE WHISKEY PROJECT GROUP

www.thewhiskeyprojectgroup.com

Maritime Modular Platform (MMP) System

A TURNKEY AERIAL DELIVERY SOLUTION

Developed by Babcock, the MMP has a proven record of enabling the warfighter to safely deploy with their craft and equipment tactically at range, night or day. Provided as a system by Capewell inclusive of parachutes, ancillaries and user training. By working together, Babcock and Capewell have developed an assured aerial delivery system that enables mission success and has a global reputation of reliability, survivability and efficiency.

FEATURES

- Rapid and safe rigging & derigging owing to the payload floating-off once its single central restraint is cut, and the resultant reduced risk of drowning owing to hazard entanglement
- Unique patented shock attenuation using a 'V-Sheet' to protect the payload
- In service for 15 years
- Modular platform size (4ft, 8ft, 12 ft)
- Universally compatible with C17, C130, A400M, KC390 and C2 aircraft
- 100% user serviced and operated
- Reusable



Babcock International
33 Wigmore Street
London, W1U 1QX, United Kingdom



26. Capewell
105 Nutmeg Road South, South Windsor, CT 06074
860.610.0700 | sales@capewell.com



C130 Tow Plate

A CRUCIAL COMPONENT USED IN LOW-ALTITUDE CARGO DROPS

A Capewell tow plate is a crucial component used in low-altitude military and humanitarian cargo airdrops from aircraft like the C-130. It connects to the aircraft's floor to release a drogue parachute. This release initiates the deployment of extraction parachutes to ensure the cargo lands safely at its destination.

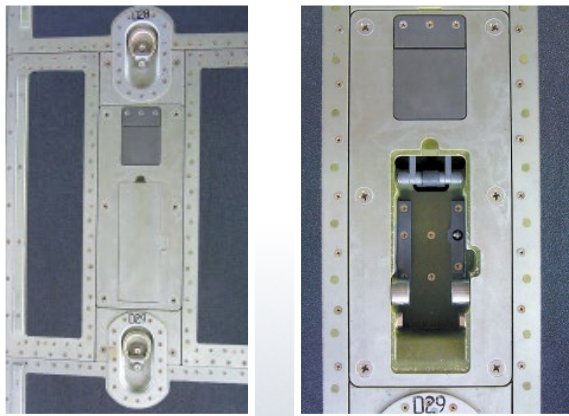


FUNCTION

It acts as a connection point for the drogue parachute and is crucial for the automated, sequential deployment of parachutes during an airdrop.

MECHANISM

The tow plate transfers the force from the drogue chute to the extraction chute(s).



Towplate mounted in aircraft

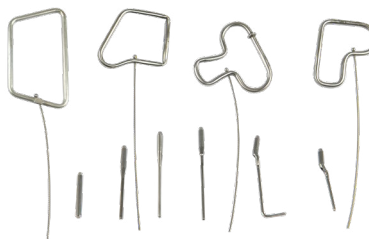


Ripcords, Grips & Pins

RIPCORDS

Capewell designs and manufactures a variety of Ripcord Assemblies and Lanyards to specifically meet your requirements.

Capewell can assist in developing specific designs. Typical designs integrate stainless steel tubing with braided cable and stainless steel pins to assure that all military and customer specifications are met.



GRIPS & PINS



Capewell's Life Support product line includes Ripcord Pins and Grips manufactured to strict military requirements. Stainless steel tubing is used whenever possible to assure that Capewell Ripcord Grips are of superior design and quality. Our Ripcord Pins are also made from stainless steel and are available in several sizes and shapes.

Capewell Grips, Pins and Ripcord Assemblies are used in a variety of applications including survival seat packs, rafts and aircraft slides. Our high quality products are also a major component of most military and sport parachute systems.

Contact Capewell early in the design stage so we can help you develop and specify a product that will resolve your most demanding challenges.

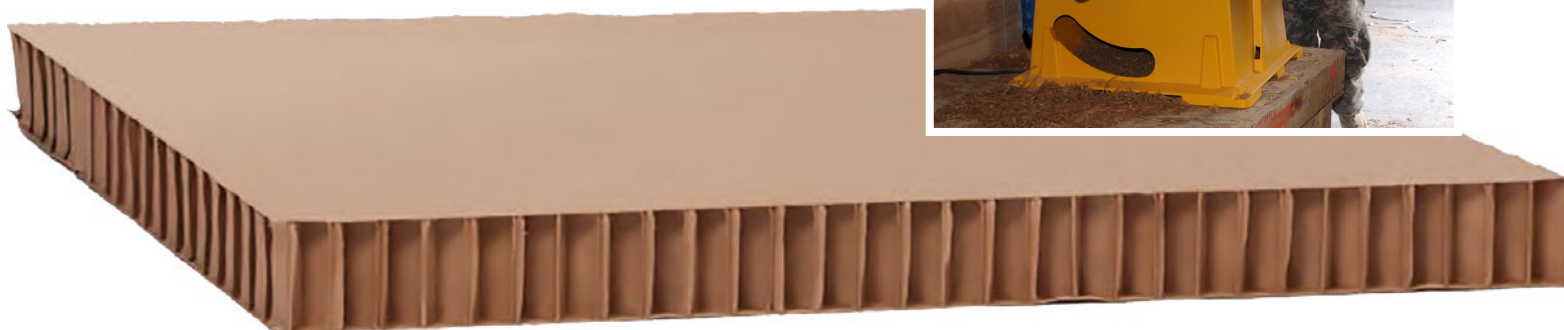


Energy Dissipating Material (EDM)

Energy Dissipating Material (EDM) is a honeycomb structure or elastically compressible material used as an energy dissipating material for the landing shock to which airdropped items are subjected.



SPECIFICATIONS	
PART NUMBER	66C38607
NSN	1670-00-162-4981
PAD SIZE	36 x 96 x 28 (inches)
CASE SIZE	36.5 x 97 x 28 (inches)
GROSS WEIGHT	122 lbs
CUBIC VOLUME	58.4 (cubic feet)
HARMONIZED TARIFF	4823.90.0000



Precision 2-10 Mechanical Timer

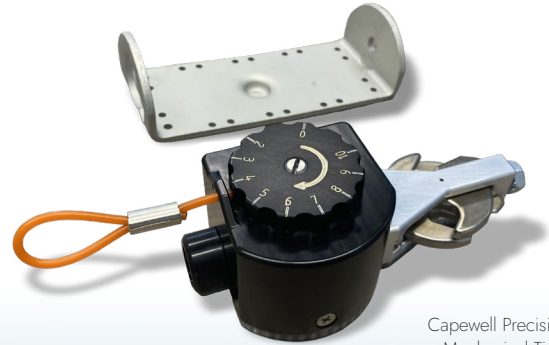
MILITARY GRADE MECHANICAL TIMER

Leveraging our commercial and military timer product line, Capewell brings to the market a wholly user-serviced, military grade mechanical timer. Applications are extensive, including parachute dereefer, replacing single-use pyrotechnics, and as a sub-component to mid-air release systems. The Capewell Precision 2-10 is compatible without modification when used as a parachute dereefer, and is a direct swap out of the current M21 pyrotechnic.



FEATURES AND BENEFITS

- Integrates with 11-1-184 M21 Reefing Cutter Bracket w/o modification
- Weighs 11 oz (same as M21 pyrotechnic reefing cutter)
- Integrates with either PIA-C-5040 Type II nylon cord or PIA-W-5625, ½ inch wide nylon web reefing lines
- Simple to operate without any tools
- Suitable for immersion in fresh or saltwater
- Constructed from corrosion resistant materials throughout
- Reuseable without batteries or other dangerous goods/HAZMAT
- No EMI concerns, either emitting or receiving
- Robust, proven mechanical timer from M1/M2 Parachute Release design
- 2-10 second time delays available in 1 second intervals for universal timing applications
- Single, dedicated time delay configurations available



Capewell Precision 2-10 Mechanical Timer and standard 11-1-184 bracket.



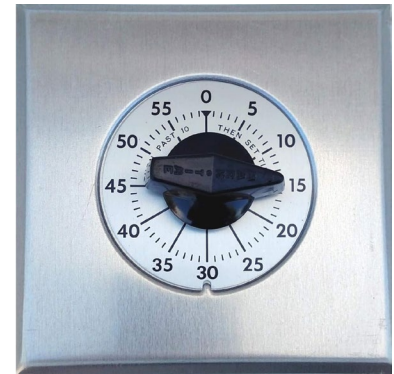
Heavy Duty Timers — 70AB Series

OVERVIEW

Proudly manufactured in the USA, the MarkTime® 70AB Series Heavy Duty Timers are engineered for demanding electrical loads and are the most robust in-wall time switch in the industry offering a 28 Amp rating.

APPLICATIONS

The MarkTime® 70AB Series Heavy Duty Timer can be used in a variety of residential and commercial applications providing convenient timed control of saunas, Jacuzzi's and pools, heavy duty blower controls, track lighting, industrial machinery, and other circuits requiring 28 Amp loads. The brushed aluminum wall plate and black knob are perfect for commercial environments.



Aluminum wall plate & black knob included.

DPST PART #	SPDT PART #	DESCRIPTION
72130AB	74112AB	60 Minute
72132AB	74114AB	2 Hour
72134AB	74116AB	5 Hour
72136AB	74118AB	12 Hour
72144AB	74122AB	15 Minute
72146AB	74124AB	30 Minute
72131AB	74113AB	60 Minute, w/Hold
72137AB	74119AB	12 Hour, w/Hold

FEATURES & BENEFITS

- Versatile time limits allow for quick, simple operation while providing the most effective energy management
- Select models have a hold feature to override automatic shutoff
- DPST and SPDT switching configurations available
- Supplied with knob, brushed aluminum dial, and wall plate
- Fits double-gang wall box and replaces a single-pole or doublepole wall switch for fast, easy installation
- Proudly manufactured in the USA

RATINGS

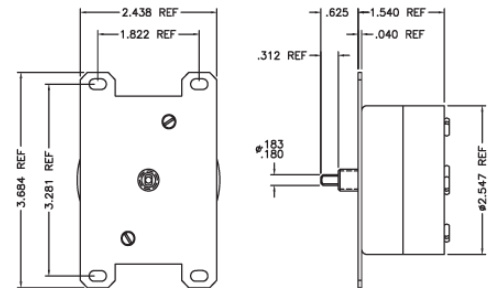
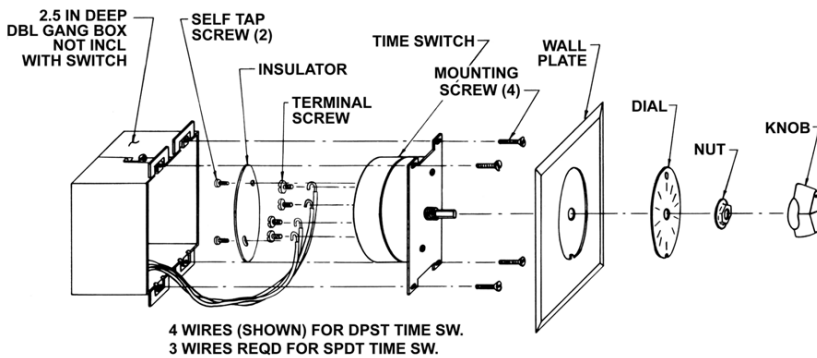
- INPUT: 120-140 VAC, 60 Hz
- 28 AMP General Purpose
- 1 Hp Motor

WARRANTY

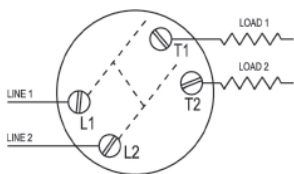
1-Year Limited Warranty



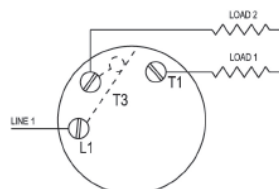
INSTALL & WIRING



SWITCHING CONFIGURATIONS



DPST SWITCH WIRING



SPDT SWITCH WIRING



3 Position Commercial Grade Time Switch

OVERVIEW

It's no secret that homes, hotels, and commercial and industrial facilities need ventilation to reduce pollutants, moisture and odors. For example, if excess moisture is not removed from bathrooms, high humidity levels can lead to mold spore growth and a buildup of allergens, as well as serious structural damage. While ventilation contributes significantly to good health and structure protection, a control device is needed to complete the solution while conserving energy. The MarkTime® 42 Series 3 position fan/light timer is an integrated timing solution for ventilation and better indoor air quality.

APPLICATIONS

Perfect for automatic shut-off control of ventilation in high humidity areas, bath fans, and whole house fans. The MarkTime® 42 Series 3 position toggle fan/light timer allows you to simultaneously turn ON a light and fan. When the toggle is in the ON position, light and fan are energized. Toggle to the OFF position, both light and fan shutdown. Toggle to the TIME position, the light goes off and fan continues to run for a preset time delay of up to 60 minutes.

FEATURES & BENEFITS

- Ease and convenience of controlling fan and light with one switch
- Timer setting at a glance with simple 3 position toggle switch
- Cost saving time delay setting of 1 to 60 minutes for removing excess moisture, reducing mold, mildew and pollutants
- Time delay control is set during installation and positioned behind the wall plate to reduce tampering by occupants
- Fits standard wall box and replaces a single-pole wall switch for fast easy installation
- Compatible with CFL and LED lamps

RATINGS

- INPUT: 120 VAC, 60 Hz
- 500W Incandescent
- 120VA Fluorescent
- 1/3 Hp Motor

WARRANTY

1-Year Limited Warranty

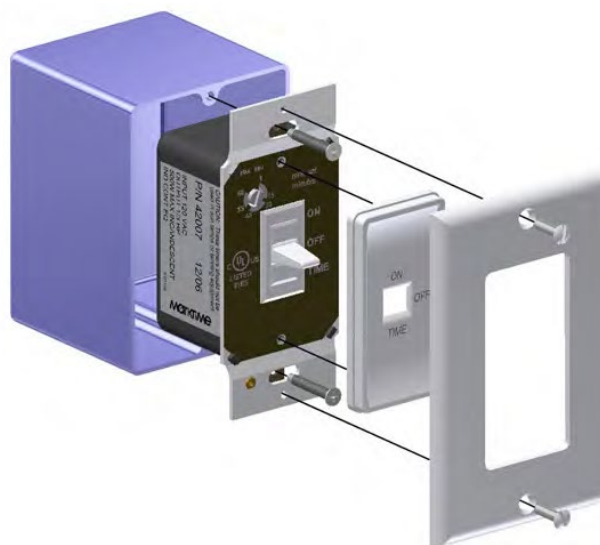


PART #	COLOR
42503	IVORY
42507	WHITE



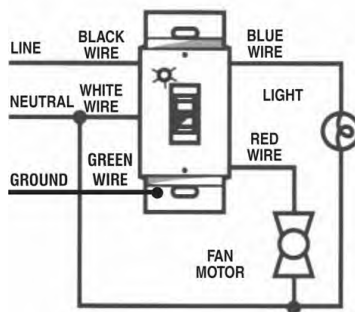
White shown

INSTALLATION

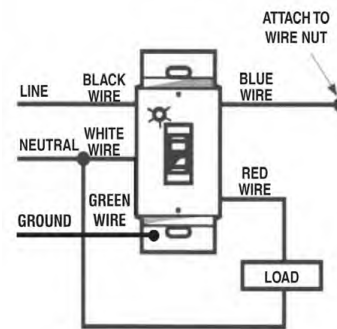


WIRING DIAGRAMS

FAN / LIGHT WIRING



SINGLE LOAD WIRING



2 Position Commercial Grade Time Switch

OVERVIEW

It's no secret that homes, hotels, and commercial and industrial facilities need ventilation to reduce pollutants, moisture and odors. For example, if excess moisture is not removed from bathrooms, high humidity levels can lead to mold spore growth and a buildup of allergens, as well as serious structural damage. While ventilation contributes significantly to good health and structure protection, a control device is needed to complete the solution while conserving energy. The MarkTime® 42 Series 2 position fan/light timer is an integrated timing solution for ventilation and better indoor air quality.

APPLICATIONS

Perfect for automatic shut-off control of ventilation in high humidity areas, bath fans, whole house fans, laundry room, and basements.

The MarkTime® 42 Series 2 position toggle fan/light timer allows you to simultaneously turn ON a light and fan. When the toggle is in the ON position, light and fan are energized. Toggle to the TIME position, the light goes off and fan continues to run for a preset time delay of up to 60 minutes.

FEATURES & BENEFITS

- Ease and convenience of controlling fan and light with one switch
- Timer setting at a glance with simple 2 position toggle switch
- Cost saving time delay setting of 1 to 60 minutes for removing excess moisture, reducing mold, mildew and pollutants
- Time delay control is set during installation and positioned behind the wall plate to reduce tampering by occupants
- Fits standard wall box and replaces a single-pole wall switch for fast easy installation
- Includes contemporary insert for use with decorator wallplates
- Compatible with CFL and LED lamps

RATINGS

- INPUT: 120 VAC, 60 Hz
- 500W Incandescent
- 120VA Fluorescent
- 1/3 Hp Motor

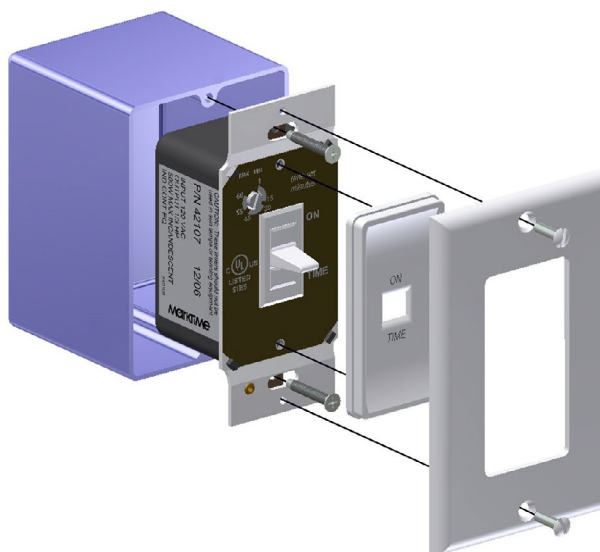
WARRANTY

1-Year Limited Warranty



PART #	COLOR
42513	IVORY - Wall plate not included
42517	WHITE - Wall plate not included
42617	WHITE - Includes wall plate

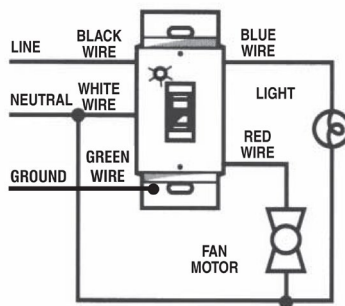
INSTALLATION



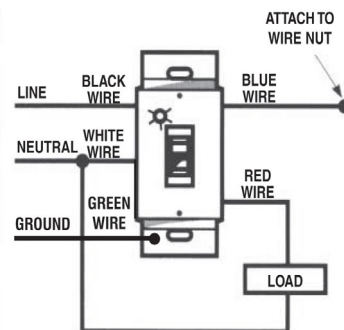
White shown

WIRING DIAGRAMS

FAN / LIGHT WIRING



SINGLE LOAD WIRING



Motorized Cycle Timers — Model C10 / C11

OVERVIEW

- These timers can be found in
 - HVAC systems
 - Warewashing equipment
 - Sterilizing equipment
- Superior cycle repeat accuracy
- Permanent magnet motor drive for fast starts & stops
- Up to 10 Cams cycling options
- $\pm 3^\circ$ Cam setting accuracy

RATINGS

- 15 Amp, 1/2 HP switch available
- Up to 10 cams cycling options
- Time: seconds, minutes and hours

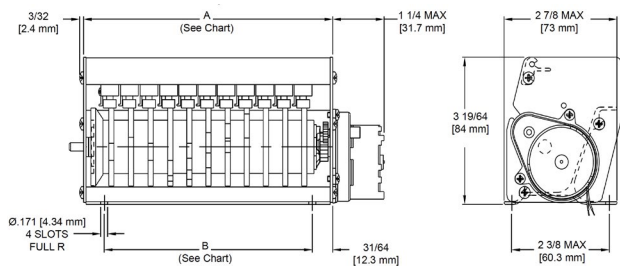
SPECIFICATIONS

MODEL	C10	C11
Motor Voltage	24V to 240V	115V to 240V
Repeat Accuracy	0.5% of cycle on continuous cycling	
Cam Setting Accuracy	3° at any one operating point 6° between any two operating points	
Framework	Extruded Aluminum Frame	Rigid Aluminum Plate
Switch Rating	Resistive AC: 10 amp. @ 120v, 240v; 1/3 HP @ 120v, 240v Resistive DC: 1/2 amp. @ 120v, 240v; 1/4 amp. @ 240v	
Switch Terminals	STD 3/16" Male Quick Disconnect	
Power Consumption	~3 watts	
Agency Approval	UL, cUL	



MODEL C10 CYCLE TIMER

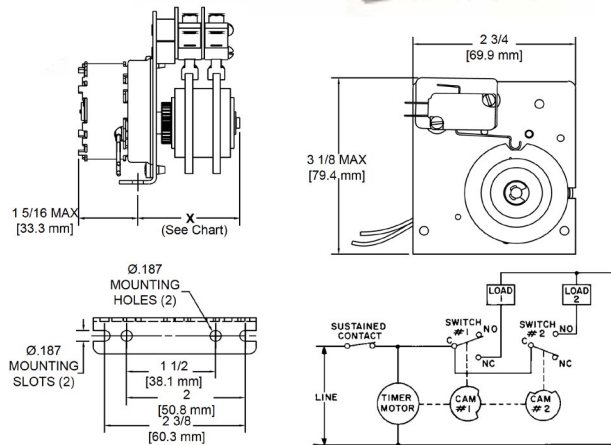
— 3 TO 10 CAMS —



# Cams	A		B	
	in.	mm	in.	mm
3	2 5/16	58.7	1 21/64	33.7
4	2 25/32	70.6	1 51/64	45.6
5	3 1/4	82.5	2 17/64	57.5
6	3 23/32	94.5	2 47/64	69.5
8	4 21/32	118.3	3 43/64	93.3
10	5 19/32	142.1	4 39/64	117.1

MODEL C11 CYCLE TIMERS

— 1 TO 3 CAMS —



# Cams	in.	mm
1	1 11/32	34.13
2	1 13/16	46.03
3	2 9/32	57.94



Capewell
105 Nutmeg Road South
South Windsor, CT 06074
860.610.0700 | sales@capewell.com